

Better

**Simpler Recycling in
West Suffolk**

Mark Walsh
Director
14 May 2026



Summary

1. Background
2. New requirements for recycling in England
3. Simpler Recycling changes in West Suffolk
4. Communications
5. Bin collection schedules
6. Questions

www.suffolkrecycling.org.uk



@suffolkrecycles

 Suffolk recycles

Back before the swinging sixties.....

- Minimal waste – called ‘dustbins’ for a reason – mainly just dust / ash.
- Minimal food waste and packaging
- Minimal recycling (totters, cub scouts, etc)
- What there was went into the ground (landfill)



West Suffolk

And then.....

- Self-serve supermarkets creates an explosion in packaging....
-leading to a consumer, throw away economy
- We don't repair things anymore, we replace them
- Unsustainable use of earth's resources and environmentally damaging



www.suffolkrecycling.org.uk



@suffolkrecycles

 Suffolk recycles

Waste in Suffolk is a “team sport”



The Suffolk Waste Partnership (SWP) comprises:

- Waste Disposal Authority (WDA) – Suffolk County Council
- Waste Collection Authorities (WCAs) – Districts / Boroughs

The 5 councils in Suffolk work closely together to carefully coordinate collection and disposal activities

Current recycling rate around 40%



www.suffolkrecycling.org.uk



@suffolkrecycles

The "Suffolk recycles" logo, which consists of a circular arrow icon followed by the text "Suffolk recycles".

Why are these changes happening?

Recycling rates in England have stalled

We lag many other developed nations

Environment Act 2021 – legal requirement

Includes 3 main elements relative to waste and recycling:

- Extended Producer Responsibility (EPR) - packaging
- ‘Simpler Recycling’ – consistency in collections
- Deposit Return Scheme (DRS)

Objectives – less waste; polluter pays; 65% recycling



Recycling challenge in West Suffolk



Average black bin composition 2019

Black bin recycling potential: 55% or 21ktpa
Food waste, Glass bottles/jars

85% diversion of black bin recyclables needed for 65% recycling rate in West Suffolk (incl. garden)



...and so 'Better Recycling'



What does this mean for the public?

- All households to receive a baseline collection of materials for recycling from 2026
- All packaging to be stamped "Recycle" or "Do Not Recycle" from April 2028
- Service changes must be made – the status quo is not an option



www.suffolkrecycling.org.uk



Suffolk recycles

Twin-stream collection schedule

Collection schedule	Week 1	Week 2	Week 3	Week 4
Refuse				
Recycling				
Food				
Garden				



What happens to our waste?

Garden Waste > Compost



West Suffolk Council

Food Waste > Fertilizer, Electricity and Vehicle fuel



General Waste > Electricity and Agrigate



Paper and Card > Recycled



Recyclables (plastic/glass/metal) > Recycled



Huge change = Communication



- Countywide advertising campaign
- Social Media campaign
- Pre-Information Pack Distribution
- Suffolkrecycles.org.uk website updated
- Service videos and accessibility assets available
- Food waste service leaflet delivered (with caddies)



Social Media



www.suffolkrecycling.org.uk



Food waste leaflet and caddies

What have you got?

You should have received two caddies. The smaller caddy is to store your food waste inside the home. This food waste can then be transferred to the larger caddy, kept outside and to be used for collection when the new service starts in June 2026.

We've also popped in a free roll of caddy liners to get you started.



Live in a flat?
If you live in a flat or share recycling and waste services with others, you may only receive the smaller caddy. A new food waste bin will be provided for you to share with your neighbours.



What are they for?

You can put any type of food waste in the food waste caddies, cooked or uncooked, bones, peelings, cakes, mouldy bread, out of date food and more.

 Leftovers	 Veg and Fruit peelings and cores	 Meat, fish & bones; cooked or uncooked
 Coffee grounds and tea bags	 Egg shells, cheese and salad	 Out of date / mouldy food

ONLY food waste and caddy liners must go in the caddies. If you include other things, we may not be able to empty it.

 No packaging of any kind	 No oils and liquid fats	 No milk and other liquids
--	---	---

How to use them

- 
Whilst you don't have to line the caddy, doing so will keep the caddy cleaner and will be easier to transfer the food waste to the larger caddy.
- 
Place your food waste into the small caddy inside your home.
- 
Tie a knot in the bag and transfer to the larger caddy outside. Don't let the caddy get too full!
- 
On the larger caddy, pull the handle forward until you hear a click to keep the lid securely shut.

We've provided you a free roll of compostable liners and replacements can be purchased from supermarkets.



IMPORTANT! Please don't start using your caddies until the start of the new service in June. We'll send you further details nearer the time. In the meantime, please store your caddies somewhere safe.

2026
June

Welcome to your new **Food Waste Caddies**



Food waste collections start June 2026. See inside for more information.

Better Recycling IS COMING TO SUFFOLK

Suffolk recycles

Better Recycling IS COMING TO WEST SUFFOLK



Out of Home Comms

West Suffolk
Council



www.suffolkrecycling.org.uk



@suffolkrecycles

 Suffolk recycles

Primary Information pack: (To be posted to each household in May)



Recycling and Waste Collections 2026

June 2026

Monday 1st Monday 8th Monday 15th Monday 22nd Monday 29th

July 2026

Monday 6th Monday 13th Monday 20th Monday 27th

KEY

- Recycling Bin (Paper and Cardboard)
- Food Waste Bin
- Rubbish Bin
- Kitchen Waste Bin (Subscriptions only)

Please ensure your bins are placed on the edge of your property by 6.30am on the day of collection.

Better Recycling
IT COMES TO SUFFOLK

Everything you need to know about
Recycling and Waste Services in Suffolk

Your new Recycling and Waste Service

Suffolk recycles

Better Recycling
IT COMES TO SUFFOLK

What goes in the BLUE BIN?

- Close bottles and jars
- Plastic pots, tins and food trays
- Drinks cartons (Tetra Pak)
- Metal cans and empty aerosols
- Tin foil and foil food trays
- Thin plastic and cling-film
- Plastic bottles

In the GREEN-LID BIN goes...

- Cardboard
- Envelopes
- Letters and other Paper
- Newspapers and Magazines
- Cardboard Egg Boxes
- Cardboard Pallets and Packaging

FOOD WASTE containers

You can put any type of food waste in the food waste containers, cooked or uncooked, bones, peelings, cakes, mouldy bread, gone off, excess and more. But please make sure you don't include any packaging.

- Leftovers
- Meat and fish, cooked or uncooked
- Coffee grounds and tea bags
- Veg and fruit peelings and cores
- Egg shells and salad

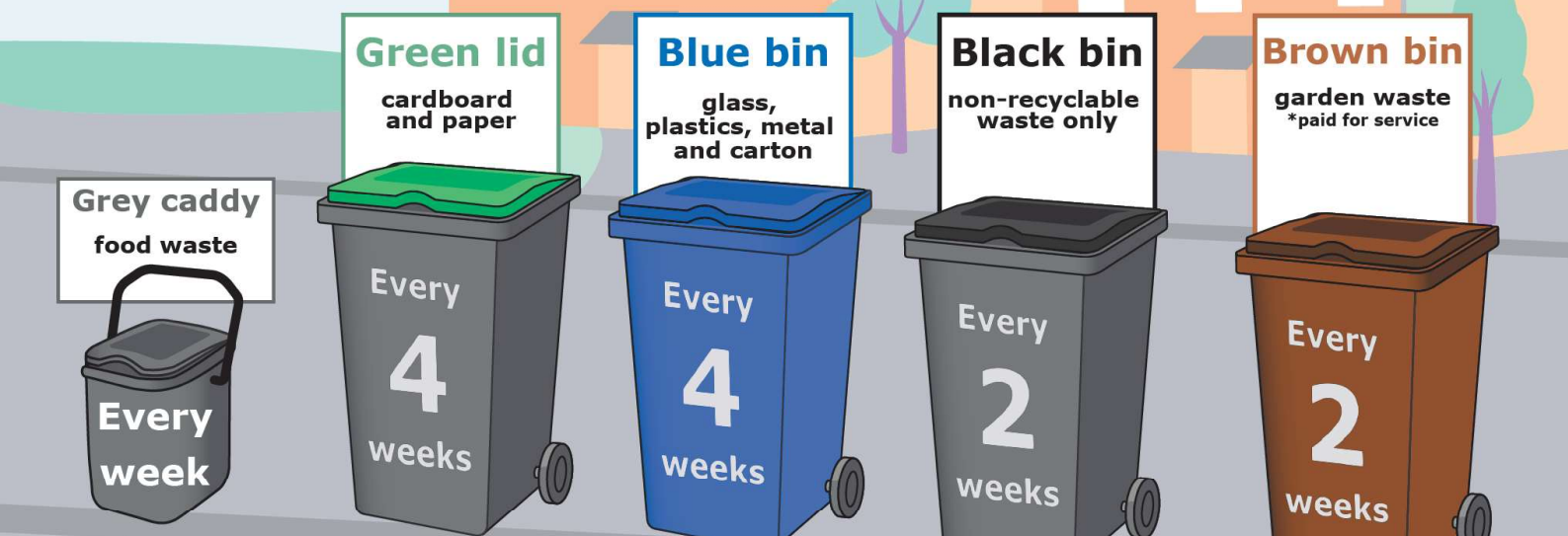
PLEASE DON'T PUT THESE THINGS IN THE BLUE BIN:
Please ensure there's no food remnants on or in any of the recyclables.

PLEASE DON'T PUT THESE THINGS IN THE GREEN-LID BIN:
Please ensure there's no food remnants on or in any of the recyclables.

PLEASE DON'T PUT THESE THINGS IN THE FOOD WASTE BIN:
Please ensure there's no food remnants on or in any of the recyclables.

Bin collection schedule changes

- 62,000 households – no change in collection week but 14,000 will have a collection day change
- 23,000 households collection week change – 15000 also a day change



Thank you
Questions



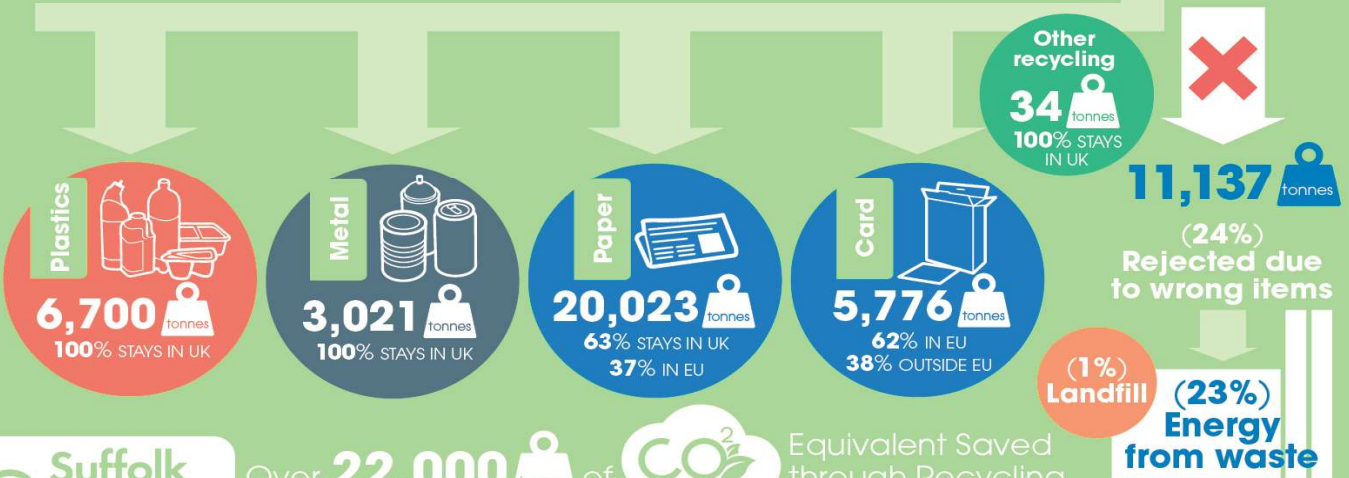
What happens to your recycling bin?



Household
Recycling Bins
46,692
tonnes



Material Recycling Facility



Over **22,000** tonnes of **CO₂** Equivalent Saved through Recycling

For more details visit www.suffolkrecycling.org.uk

Summary of the Simpler Recycling reforms

What?

- Reforms to recycling collections in England
- Household and non-household municipal premises to have separate collections of:

Dry recyclable waste



Organic recyclable waste



Residual



Why? Contribute towards reaching: **65%** municipal recycling rate by 2035



Environmental, economic or social benefit

- Reduced landfill and incineration and associated carbon emissions
- Reduced carbon emissions as a result of reduced production from virgin materials
- Support growth of UK recycling industry



Who?

All households in England including flats



Non-household municipal (NHM) premises in England



Businesses:

MICRO	SMALL	MEDIUM	LARGE
<10	<50	<250	≥250
(number of full-time equivalent employees)			



- Residential homes
- Educational establishments
- Hospitals or nursing homes



Subject to consultation:

- Places of worship
- Penal institutes
- Charity shops
- Hostels
- Public meeting places

Collectors

- (Subject to consultation) Local authorities / other waste collectors can co-collect dry recyclables and/or co-collect organic waste to reduce the number of containers required
- Local authorities must provide a weekly food waste collection to all households
- Local authorities must provide garden waste collections to households where requested



When?

31st March

2025 Small, medium, and large NHM premises recycle all waste streams, except plastic film and garden



31st March

2026 Households recycle all waste streams, except plastic film (and food where transitional arrangements apply)



31st March

2027 Micro-firms recycle all waste streams except garden
Plastic film collections from all properties



How?

- Funding will be provided to local authorities for the household collection requirements:
 - Local authorities will receive payments from packaging producers under EPR
 - Local authorities will receive new burdens funding for providing food waste collections
 - Local authorities can charge for garden collections



*Garden waste requirement only applies to households and only where specifically requested by the householder